



Recycling Impacts from the National Sword

The U.S. is the largest exporter of recycled commodities, and for the last several decades, China was the largest importer of those materials. However, the Chinese government recently introduced a "National Sword" policy that set extremely stringent parameters on the quality of recyclable materials imported into their country. Their focus is to reduce contamination of those recyclable materials; which is occurring when people place trash into the recycle bin, often thinking it will be recycled. This policy is significantly impacting the global recycling industry, including the State of Pennsylvania.

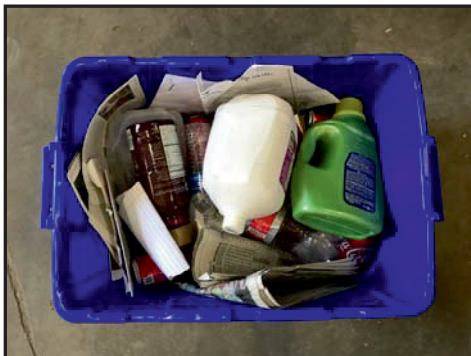
Most material recovery facilities (MRF) that process single-stream materials are struggling to meet China's quality standards, so they are forced to sell commodities into alternative markets at much lower prices. The result is a challenging financial situation for the recycling industry.

The Solid Waste Authority's recycling program is a source separated program. In other words, we ask residents to separate their recyclables when using one of the many recycling drop-off sites throughout the County or place the acceptable materials in the issued recycling bin(s) for curbside collection and sorting by the Authority's recycling team. This type of collection system helps ensure that we have adequate and sustainable markets for the material we collect. We ask that residents of Clinton County 'recycle right' and help us process clean, marketable products.

Proper Curbside Recycling

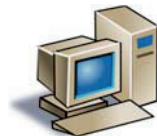
To our recycling curbside customers - please remember to keep your newspaper separate from the other grades of recyclable paper, such as, office paper/magazines/junk mail/paperboard/phonebooks. Additional recycling guidelines are provided further on in this newsletter. It is also helpful to place your plastic containers and tin/aluminum cans in a separate bin. If you do not have a second bin, an alternate container may be used as long as our recycling crew can easily unload the container. Examples of proper curbside recycling is provided below:

Improper Example



Proper Example





Electronics Recycling



Certain types of electronic devices (listed below) have been banned from landfill disposal by the **Pa Department of Environmental Protection**. Starting on January 1, 2018, the Authority implemented a charge program for these banned electronics due to the rising operational costs associated with recycling this material.

As such, this material is no longer accepted at the Authority's Recycling Center on Pine Mountain Road, in Wayne Township. Anyone wishing to recycle their “banned” electronic devices will need to deliver the material to the Landfill weigh station located at the end of Landfill Lane. The banned material and associated fees are outlined below:

Televisions - \$20 each

Computer Monitors - \$20 each

Computers Towers/Laptops/Tablets - \$10 each

2018 John B. Hoy Jr. Memorial Scholarship Recipient

Each year the Authority provides a \$1,000 scholarship to a fulltime high school senior or college freshman student residing in Clinton County.

This year's scholarship recipient is Joseph Moore, a current senior at Central Mountain High School. Joseph has been accepted at Pennsylvania College of Technology in the Fall of 2018. He will be a student in the Heavy Construction Equipment Technology: Operator Emphasis,

Since he was young, Joseph has had an interest in operating equipment. He said his most impactful experience educationally was his involvement in Take Your Child to Work Day where he went to a construction site with a family friend, spending the day outdoors completing manual labor on an active work site. That was the best!

Curbside Recycling Application

Have you considered the convenience of curbside recycling? The Authority will stop by your home every two (2) weeks and pick up your recyclables for a nominal **annual fee of \$42** (\$3.50 per month). The materials we collect include: aluminum & tin cans, newspaper, magazines, junk mail, paperboard and plastic containers (< 1 gallon in size). **(The Authority is under contract with the City of Lock Haven to provide this service to city residents. If you live in the City, please continue to put your recyclables out on your curbside on the regularly scheduled dates. If you need a collection box, call City Hall at 570-893-5900.)**

Name: _____ **Phone:** _____

Street Address: _____

PO Box: _____ **City:** _____ **State:** _____ **Zip:** _____

Please Place an “X” in the Collection Zone you are located:

Zone 4 – Flemington/Beech Creek (Thursday)	Zone 5 - Mill Hall/Loganton/Rauchtown (Monday)	Zone 6 - Avis (Thursday)	Zone 8—Dunnstown (Wednesday)
Zone 9—Castanea/McElhattan (Monday)	Zone 11—Renovo & Surrounding areas (Friday)		



Curbside Recycling Program

Below you will find a table that describes what we collect via our curbside recycling program. The table also outlines how to prepare the material for recycling and what materials are not accepted.

MATERIAL	WHAT CAN BE RECYCLED	HOW TO PREPARE FOR RECYCLING	WHAT CAN'T BE RECYCLED
Newspaper	Clean newspaper (including inserts).	Separate from mixed paper.	Wet or dirty newspaper.
Mixed Paper	Office paper, junk mail, phone books, magazines, catalogs, glossy paper.	Separate from newspaper.	Laminated paper and tissue paper.
Paperboard	Clean food boxes, paper towel rolls, shoe boxes, tissue boxes.	Include with mixed paper.	Wax coated food boxes, juice cartons, ice cream containers.
Cans	Aluminum & tin food and beverage cans.	Rinse, leave labels on.	Pie plates, aluminum foil, pesticide or herbicide spray cans.
Plastic Containers	Plastic bottles & jugs, coded #1 thru #7, less than 1 gallon in size.	Rinse, remove lids, leave labels on.	Containers greater than 1 gallon, toys, motor oil bottles, laundry baskets, chairs, Styrofoam & polystyrene containers.



Clinton County Residential Tire Collection Event

On May 18th and 19th the Authority held another residential Tire Collection Event. In addition to Clinton County residents, ten Lycoming County municipalities were also invited to participate. The event was very successful. Over 500 residents participated in the two day collection event. The event collected over 4,800 tires, bringing the total number of tires collected since 2003 to nearly 81,000 tires! Thank you to everyone who helped make this event a successful one.

Other Important News!!!

- ◆ Clinton County residents may bring **clean wood waste, brush & yard waste** to our mulch facility free of charge. The charge for businesses is \$15.00 a ton for **stumps, clean wood waste, brush & yard waste**. This material cannot be painted, stained, treated, or containing metal.
- ◆ The cost for using WTL **Self-Dump** is \$20 for a single load and \$33 for a double or oversize load.
- ◆ Mulching season is here! Our #1 regular mulch is \$22 per yard. Want a little color in your yard? Choose dyed black, brown or red mulch for \$28 per yard.
- ◆ The cost to **pick up your recyclables** on a bi-weekly basis is an annual fee of \$42 (\$3.50 per month).
- ◆ Please visit the **WTL's website**, www.waynetwplandfill.com, for updated information on recycling, the landfill and other events.
- ◆ **Educational Tours** for all ages are available by appointment. Please call 570-769-6977 to schedule a tour.
- ◆ **Clinton County residents** with appliances containing Freon can bring them to WTL free of charge.



Clinton County Municipal Recycling Drop-Off Sites

CCSWA Recycling Center, McElhattan	A/S/T, NP, PL, CB, OP, JM, MG, PB, MO, BA, AF
Bald Eagle Township Building	A/S/T, NP, PL, CB, OP, JM, MG, PB
Beech Creek Borough Building	A/S/T, NP, PL, CB, OP, JM, MG, PB
Castanea Township Building	A/S/T, NP, PL, CB
Chapman Township Building	A/S/T, NP, PL, CB, OP, JM, MG, PB
City of Lock Haven	A/S/T, NP, PL, CB, OP, JM, MG, PB
Crawford Township Building	A/S/T, NP, PL, CB, OP, JM, MG, PB
Colebrook Township Building	A/S/T, NP, PL
Gallagher Township Building	A/S/T, NP, PL, CB, OP, JM, MG, PB
Greene Township Building	A/S/T, NP, PL, CB, OP, JM, MG, PB
Lamar Township Building	A/S/T, NP, PL, CB, OP, JM, MG, PB
Leidy Township Building - Crossfork & Tamarack	A/S/T, NP, PL
Loganton Borough Building	A/S/T, NP, PL, CB, OP, JM, MG, PB
Logan Township Building	A/S/T, NP, PL, CB, OP, JM, MG, PB
Mill Hall Borough Building	A/S/T, NP, PL, CB, OP, JM, MG, PB
Pine Creek Township - Chatham Run	A/S/T, NP, PL, CB, OP, JM, MG, PB
Pine Creek Township - Harrisland	A/S/T, NP, PL, CB, OP, JM, MG, PB
Porter Township Community Building	A/S/T, NP, PL, CB, OP, JM, MG, PB
Porter Township - Conservation District/Extension	A/S/T, NP, PL, CB, OP, JM, MG, PB <i>CLOSED</i>
Renovo Borough - 230 11th Street	A/S/T, NP, PL, CB, OP, JM, MG, PB
Swissdale United Methodist Church	A/S/T, NP, PL, CB, OP, JM, MG, PB
Wal-Mart - Hogan Boulevard	A/S/T, NP, PL, CB, OP, JM, MG, PB
A/S/T - Alum, Steel, Tin Cans NP - Newspaper PL - #1 thru #7 Plastic Containers AF - Antifreeze	MG - Magazines CB - Corrugated Cardboard MO - Motor Oil PB - Paperboard
	OP - Office Paper JM - Junk Mail BA - Vehicle Batteries

Curbside Recycling Notes

Recycling should be placed at the curbside by 7:00 a.m., ready for pick-up on that day.

If your scheduled day of pick-up falls on a holiday, your recycling will be picked up on the next business day.

If you have more recycling than your the curbside bin will hold, mark the additional material "Recycling" so the recycling crew will know it contains recyclables.

Thank you for keeping us organized!

Clinton County Solid Waste Authority Board of Directors

- Chairperson - Terry L. Weaver
- Vice Chairperson - Ernest F. Peterson
- Secretary - William E. Kellander, Jr.
- Treasurer - Fred E. Beury
- Asst. Sec/Treas. - Linda M. Leonard
- Board Member - James S. Lovette
- Board Member - Bruce W. Peters
- Board Member - James H. Maguire, Sr.
- Board Member - James A. Russo
- Commissioner Liaison -Robert B. "Pete" Smeltz, Jr.



This publication is partially funded by Act 101 Recycling Grant through the Pennsylvania Department of Environmental



This edition of Clinton County Source is printed on 100% post-consumer waste recycled paper.