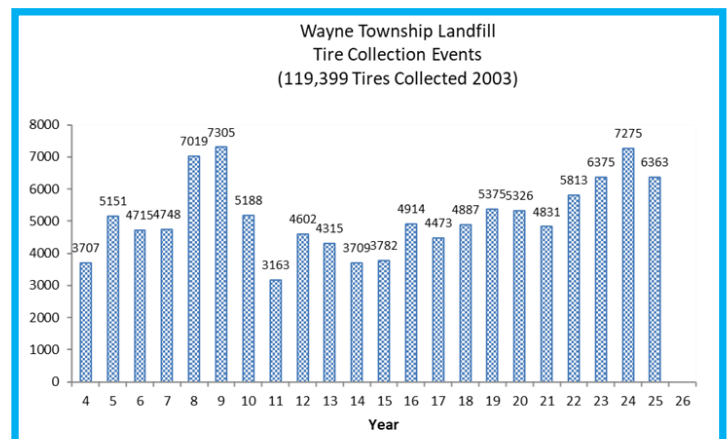
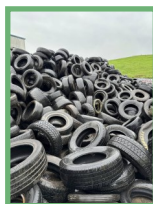


2025

Summer



**RECYCLE RIGHT CLINTON COUNTY** - The sustainability of our recycling program is dependent on collecting high quality materials without unacceptable materials or trash. We need your help, please do your part! Check out our website and our Facebook page for additional information and resources!



### 2025 Tire Day Results are in!

Our annual tire day(s) were held May 9th & 10th 2025. The two day event was open to all Clinton County Residents and several invited Lycoming County Townships, free of charge. This year we collected 6,363 tires and served 676 households! Thank you to all that participated and especially to our team for making this event successful!



**HOUSEHOLD HAZARDOUS WASTE (HHW) Collection Event will be Saturday, July 26, 2025 from 8A-1P** at our Recycling Center, 337 Pine Mountain Road, Lock Haven. Open to ALL Clinton County Residents! **Acceptable Items include:** Pool Chlorine, Auto Batteries, Rechargeable Batteries, Motor Oil, Paint Remover, Antifreeze, Pesticides, Herbicides, Cleaners, Brake Fluid, Aerosol Cans, Fluorescent Bulbs, Mercury & Mercury Containing Devices.

**Restricted Items:** We will NOT accept latex & oil-based paint.

For proper disposal, solidify first, then dispose of paint. Paint may be hazardous in its liquid form. If only a small amount of paint is left, simply remove the lid (outside, with good ventilation) and let dry. Then the can may be put out for trash disposal. If recycling of the can is available, remove the dried paint from the can and then place with metal cans. If you have more than which would dry, there are various ways to dry paint :

- Add clay-based kitty litter, newspaper, or similar material to the paint and let dry. Then dispose of this dried mixture with your trash.
- Some local hardware and paint stores carry a paint solidifier. Simply purchase, follow directions and when paint is dried, put out for trash collection. Please visit our website for more information: [waynetwplandfill.com](http://waynetwplandfill.com)

## Curbside Recycling: An Overview



Below you will find a table that describes what we collect via our curbside recycling program. The table also outlines how to prepare the material for recycling and what materials are not accepted. For information regarding our municipal recycling drop-off sites please see page 4 or visit our website at [www.waynetwpilandfill.com](http://www.waynetwpilandfill.com).

MATERIAL	WHAT CAN BE RECYCLED	HOW TO PREPARE FOR RECYCLING	WHAT CAN'T BE RECYCLED
<b>Newspaper</b>	Clean newspaper (including inserts).	Separate from mixed paper.	Wet or dirty newspaper.
<b>Mixed Paper</b>	Office paper, junk mail, phone books, magazines, catalogs, glossy paper.	Separate from newspaper.	Laminated or coated paper, tissue paper and paper towels.
<b>Paperboard</b>	Clean food boxes, paper towel rolls, shoe boxes, tissue boxes.	Include with mixed paper.	Milk cartons, juice cartons, ice cream containers and similar materials.
<b>Cans</b>	Aluminum, steel, & tin food and beverage cans.	Rinse, leave labels on.	Pie plates, aluminum foil, pesticide or herbicide spray cans.
<b>Plastic Bottles &amp; Jugs - ONLY</b>	Plastic bottles & jugs, coded #1 - #7	Rinse, remove lids, leave labels on.	Toys, motor oil or chemical bottles.

### Curbside Recycling Collection Notes:

- ◆ Recycling material should be placed at the curb by 7:00 am on the day of your scheduled pick-up.
- ◆ If you put out more recycling than fits in your blue or green recycling bin, please mark it "Recycling".
- ◆ If your pick-up day falls on a major holiday, your recycling material will be picked up on the next business day.

## Curbside Recycling Application

Have you considered the convenience of curbside recycling? The Authority will stop by your home every two (2) weeks and pick up your recyclables for a nominal **annual fee of \$96** (\$8.00 per month). Annual fee will be prorated based on service start time.

The materials we collect include: aluminum & tin cans, newspaper, magazines, junk mail, paperboard and plastic bottles & jugs. (The Authority is under contract with the City of Lock Haven to provide this service to city residents. If you live in the City, please continue to put your recyclables out on your curbside on the regularly scheduled dates. If you need a recycling bin, call City Hall at 570-893-5900.)

**Name:** \_\_\_\_\_ **Phone:** \_\_\_\_\_

**Street Address:** \_\_\_\_\_

**PO Box:** \_\_\_\_\_ **City:** \_\_\_\_\_ **State:** \_\_\_\_\_ **Zip:** \_\_\_\_\_

**Please Place an "X" in the Collection Zone you are located:**

Zone 5—Flemington/ Mill Hall (Monday)	Zone 6—Avis/Woolrich (Thursday)	Zone 8—Dunnstown/ Renovo (Wednesday)	Zone 9—Castanea/ McElhattan (Monday)
--	------------------------------------	---	---

**Manure & Leaf Compost at WTL!**

Compost is the safest way to boost the integrity of your soil for growing plants. Whether it be grass, vegetables or flowers. WTL offers 2 types of compost: Manure Compost and Leaf Compost. Each compost starts out with approximately 60% decomposed landscape mulch and then 40% other manure or leaves is added. Each type of compost goes through multiple heat cycles until the compost reaches ~140° F for 3 consecutive days. These heat cycles ensure that mold, fungi, spores, and insects are eliminated. Compost builds healthy soil, increases organic content, helps to prevent soil erosion, conserves water and improves plant growth in your gardens. Be sure to stop in and get your garden a boost!  
**We can deliver this material, mulch, and more. Call us at 570-769-6977 to schedule!**

Remember to **RECYCLE ALL OF YOUR BATTERIES!**

Batteries containing metals such as lithium and nickel can spark and explode when damaged. Fires in garbage and recycling trucks, landfills, and recycling facilities are on the rise. Help us protect garbage and recycling workers, their vehicles, and your community by safely recycling batteries. Our recycling center accepts **all** batteries free for Clinton County residents!



**Wayne Township Landfill—Recycling Center**  
 337 Pine Mountain Road  
 Lock Haven, PA 17745  
 Monday– Friday 7A–4P  
 Saturday 7A–12P



**Other Important News!**

- ◆ The cost for using WTL Self-Dump is \$30 for a single load and \$50 for a double or oversize load. Please remember to tarp and secure your load.
- ◆ Are you ready for some DIY landscaping? Our #1 regular mulch is \$25 per yard. Want a little color in your yard? Choose dyed black or brown mulch for \$32 per yard. Call our office for delivery options!
- ◆ We accept yard waste free of charge for Clinton County Residents
- ◆ We accept tires at the landfill everyday. The cost is \$3.00 per car/light truck tire for Clinton County residents.
- ◆ City of Lock haven has an ordinance which requires all commercial entities to recycle at least 3 materials. Please contact us to get set up. We have a program to fit your budget!
- ◆ WTL’s website, [www.waynetwplandfill.com](http://www.waynetwplandfill.com), check for information on recycling, the landfill and other events!
- ◆ Educational Tours for all ages are available by appointment. Please call 570-769-6977 to schedule a tour.
- ◆ Clinton County residents with appliances containing Freon can bring them to WTL free of charge.
- ◆ Well into 2025 we are excited that Landfill Lane is open, (past the administration building to the left,) and has been a successful revision to our operation! We continue to see the benefit of the new entrance and just ask everyone to use caution and care when driving into the Landfill. Reminder our speed limit is 10 MPH.



By recycling, **Clinton County** residents have saved

**345,816** CYD’s of airspace!

That is almost **1 YEAR** of landfill space! We have 27 years of landfill space remaining!

**DEP's goal is 35%**

Clinton County Recycling History:

Clinton Co. Score	Year	Tons Recycled
36.0%	2020	15,824.86
36.7%	2021	17,828.25
38.3%	2022	17,870.47
35.6%	2023	15,785.09
38.6%	2024	18,362.12

**We have hit the goal every year since 2008**



## Clinton County Municipal Recycling Drop-Off Sites

CCSWA Recycling Center, Wayne Township	A/S/T, NP, PL, CB, OP, JM, MG, PB, MO, BA, AF, RB, GL		
Bald Eagle Township Building	A/S/T, NP, PL, CB, OP, JM, MG, PB		
Beech Creek Borough Building	A/S/T, NP, PL, CB, OP, JM, MG, PB		
Castanea Township Building	A/S/T, NP, PL, CB, OP, JM, MG, PB		
Chapman Township Building	A/S/T, NP, PL, CB, OP, JM, MG, PB		
City of Lock Haven—Third Avenue	A/S/T, NP, PL, CB, OP, JM, MG, PB		
Crawford Township Building	A/S/T, NP, PL, CB, OP, JM, MG, PB		
Colebrook Township Building	A/S/T, NP, PL		
Gallagher Township Building	A/S/T, NP, PL, CB, OP, JM, MG, PB		
Greene Township Building	A/S/T, NP, PL, CB, OP, JM, MG, PB		
Lamar Township Building	A/S/T, NP, PL, CB, OP, JM, MG, PB		
Leidy Township Building - Crossfork & Tamarack	A/S/T, PL		
Loganton Borough Building	A/S/T, NP, PL, CB, OP, JM, MG, PB		
Logan Township Building	A/S/T, NP, PL, CB, OP, JM, MG, PB		
Mill Hall Borough Building	A/S/T, NP, PL, CB, OP, JM, MG, PB		
Pine Creek Township - Chatham Run	A/S/T, NP, PL, CB, OP, JM, MG, PB		
Pine Creek Township - Harrisland	A/S/T, NP, PL, CB, OP, JM, MG, PB		
Porter Township Building – 304 Peach Orchard Rd	A/S/T, NP, PL, CB, OP, JM, MG, PB		
Renovo Borough—13635 Renovo Rd—Dollar Tree	A/S/T, NP, PL, CB, OP, JM, MG, PB		
Swissdale United Methodist Church	A/S/T, NP, PL, CB, OP, JM, MG, PB		
Wal-Mart - Hogan Boulevard	A/S/T, NP, PL, CB, OP, JM, MG, PB		
A/S/T - Alum, Steel, Tin Cans	MG - Magazines	OP - Office Paper	GL - Bottles & Jars
NP - Newspaper	CB - Corrugated Cardboard	JM - Junk Mail	
PL - #1 thru #7 Plastic Bottles & Jugs	MO - Motor Oil	BA - Vehicle Batteries	
AF - Antifreeze	PB - Paperboard	RB - Residential Batteries	

### Clinton County Solid Waste Authority 2025 Board Meeting Schedule

Meetings begin at 5:00 pm unless otherwise publicized.  
Meeting agendas can be found on our website.

- |               |                |
|---------------|----------------|
| • January 8   | • July 9       |
| • February 12 | • August 13    |
| • March 12    | • September 10 |
| • April 9     | • October 8    |
| • May 14      | • November 12  |
| • June 11     | • December 10  |

### Clinton County Solid Waste Authority Board of Directors

- Chairperson - Bruce W. Peters
- Vice Chairperson - James S. Lovette
- Secretary - Linda M. Leonard
- Treasurer - Fred E. Beury
- Asst. Sec/Treas. - Kyle D. Stewart
- Board Member - Brian J. Hoy
- Board Member - James A. Russo
- Board Member - Terry Weaver
- Board Member - Daniel L. Vilello
- Commissioner Liaison - Angela Harding



This publication is partially funded by Act 101 Recycling Grant through the Pennsylvania Department of Environmental Protection.